

# FASSADE

by

WOODSTOXX

---

## CONCEPT

“Innovation is change  
that unlocks new  
value.”

---

Unlocking new value — That is exactly what **FASSADE** does. Woodstoxx developed this brand-new collection of cladding in response to demand from architects. We realised some time ago that there clearly was a market for a cladding system that met consumer requirements in terms of aesthetics and durability, as well as quality and fire resistance.

**A system that ticked all these boxes, just like Fassade.**

Take a look at this surprising new collection, consisting of three types of wood – Abechi, Pina and Limba – that are each available in 16 profiles and 12 colours.

Keep reading and get inspired!

WOODSTOXX

---

# Pick your profile.

We really mean it when we say that Fassade has something for everyone. With 16 different vertical profiles, the collection offers a wide range of opportunities, ensuring that consumers will always find something that suits their taste and style. From a lovely rustic profile to an ultramodern look. What's more, all the designs are patented.



Plato



Uno



Duo



Trio



Vario



Ligno



Unicus



Garillo



Martello



Torpedo



Robusto



Duplo



Mundus



Cavum



Summum



Magnum

# Pick your wood.

## 01 ABECHI

ABECHI is a fast-growing African hardwood, belonging to durability class 2 after thermal modification. Thanks to the Duricoat® preservation process, the timber cladding is even more robust and resistant.

## 02 PINA

Pina is a fast-growing and distinctive type of wood, belonging to durability class 2 after thermal modification. We also apply the Duricoat® preservation process to Pina, to make the cladding more scratch-resistant and ensure it looks its best.

## 03 LIMBA

Limba is a fast-growing and distinctive type of wood, also belonging to durability class 2 after thermal modification. Typical of this wood species is its warm brown colour, with subtle pinstripes and small pinholes, which provide a characteristic look.

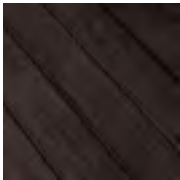
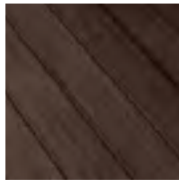
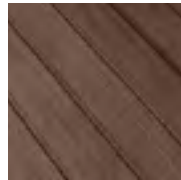
01

02

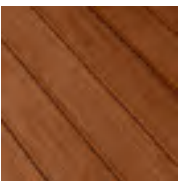
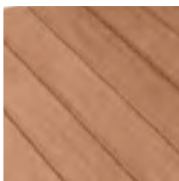
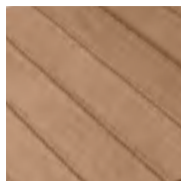
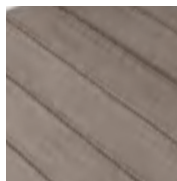
03



# Pick your colour.

*Black**Volcano**Bronze*

Greys, earth tones or unfinished wood? In addition to 16 different profiles, Woodstoxx has also come up with 12 superb colours. Depending on the project and whether you want the wood to retain its colour or prefer a more weathered look, our team will gladly advise you on which colour finish is the most suitable.

*Toffee**Beaver**Shelby Grey**Mineral Grey*



Wood is a living, natural product. In concrete terms, this means that a timber façade will undergo some changes in the course of time. However, you can exercise some control over how these changes take place. Thanks to Fassade, you are guaranteed even discolouration, whether you prefer to retain the original hue or allow the wood to weather naturally.





# Pick your samples.

Are you an architect or a designer, and would you like to learn more about all the possibilities? Our Sample Box is sure to be a great help! The Fassade Sample Box introduces you to the wealth of colours offered by this collection. What's more, each sample features a QR code for easy access to 3D textures, product photos and technical specifications. Do you prefer Abechi or is Pina more to your liking? If you can't choose, we can easily provide you with both boxes.

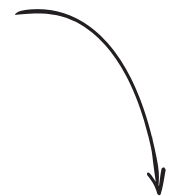
Make an appointment at one of our experience centres and pick up your box(es). There's no better way to get valuable inspiration as well as custom advice from our sales team!





*Get yours now!*

Scan the QR code and  
make an appointment  
at one of our experience  
centres.





# Duricoat®:

— Double  
the durability

Do you think that wood won't hold up outdoors? We are happy to prove you wrong. Obviously you want your façade to look its best for as long as possible. To guarantee this, Woodstoxx developed Duricoat®: a new, patented preservation process that is applied to softer, thermally modified wood. The treatment process increases this type of wood's resistance to scratches and other damage, ensuring it weathers nicely and looks good for longer.

In the words of R&D Manager Yves Lecluyse: “We can justifiably be proud of Duricoat®. It marks a significant step forward in enhancing the sustainability of softwood. Normally speaking, people prefer tropical hardwood for outdoor use, but these varieties are gradually becoming depleted. We would not be worthy of the label ‘Suppliers of nature’ if we were not constantly on the lookout for equally good, sustainable alternatives. One of our greatest successes in that respect is Duricoat®.”

*“Thanks to Duricoat®, hardwood is no longer the only option when you are looking for façade cladding of a sublime quality.”*



## — A solution to multiple problems

To put it briefly: Fassade is the perfect answer to four problems rolled into one. Our R&D team started out by concentrating on a number of problems commonly encountered with thermally modified façade cladding and came up with a solution to every disadvantage when they developed Fassade.

This includes water stains, uneven colouring, brittleness and fire resistance. The water stains and brittleness are countered by sealing the end face and with Duricoat®, resulting in a scratch-resistant and water-resistant type of timber. To solve the issue of uneven discolouration, we worked with an architect's panel to develop twelve different shades that are guaranteed to discolour evenly. Do you prefer a naturally – and evenly – weathered façade? This is also possible. Or do you want to retain its original brown or black colour? No problem, as long as the façade is maintained correctly.

In addition to all this, Fassade cladding is treated against blue stain fungus, wood rot and algi, which significantly reduces the risk of these issues. We also aim to include as many half quarter sawn and quarter sawn planks as possible, in order to maximize the stability of the planks and minimise the risk of warping. Last but not least, Woodstoxx has also developed a wide range of fire-resistance solutions.





Of course, good maintenance is the key to preserving the beauty of your cladding. That is simply a fact. But does that also mean that timber façade cladding is a high-maintenance product? Far from it! Nevertheless, annual inspections, regular maintenance and a fresh coat of your finishing product every now and then are minor efforts that can make a major difference.

# Maintenance is easy

— How proper maintenance makes all the difference





# Stained or weathered

— The choice  
is yours



It's up to you to decide whether you prefer your cladding weathered or in its original colour. Just bear in mind that if you do not apply a fresh coat of finishing product from time to time, the timber will gradually and naturally weather to a lovely shade of grey. Fassade will always weather completely evenly. So, allowing your cladding to turn grey naturally really can be an aesthetic choice. However, retaining the original colour is also an option. In that case, you will need to apply a new coat of your chosen finishing product in due time. It's all up to you!





# Respect for nature

— What makes Fassade such a sustainable choice



Certified wood is a sustainable choice for building projects. But Fassade raises the stakes. Nowadays, tropical hardwood is the preferred hardwood for outdoor use. Unfortunately, more and more of these hardwood species are endangered as a result.

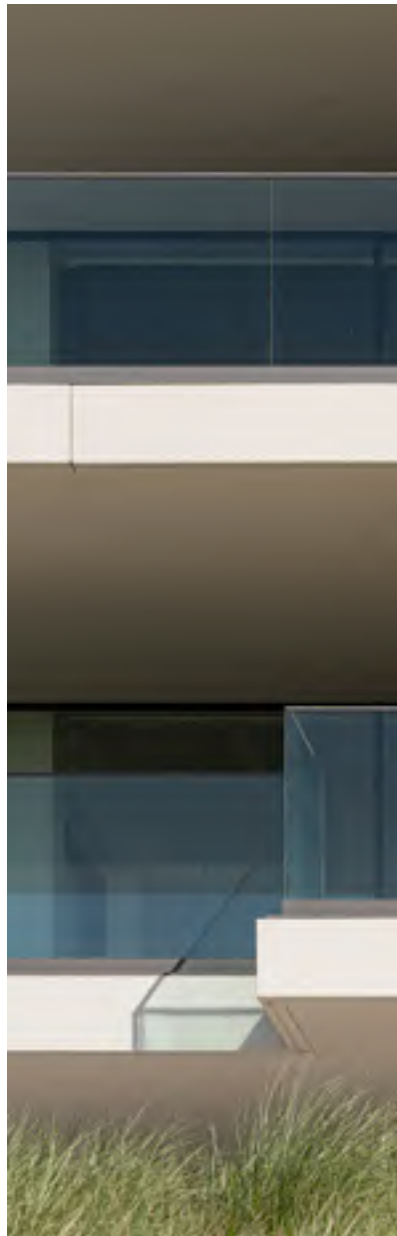
That is exactly why we developed Fassade. Thanks to the Duricoat® process, Fassade offers a valid alternative to hardwood. Moreover, we chose three fast-growing tree species, which can be felled and replaced more easily, resulting in more carbon dioxide being absorbed from the air. Trees absorb more CO<sub>2</sub> through their leaves in their growth phase. We hope that this paves the way for the use of softwood as a valid alternative for outdoor applications to help curb the demand for tropical hardwood. FSC certified is available upon request.



*“If felled correctly, these fast-growing trees will be fully grown again in fifty years’ time.”*









# Fire-retardant cladding

— Woodn't that be nice?

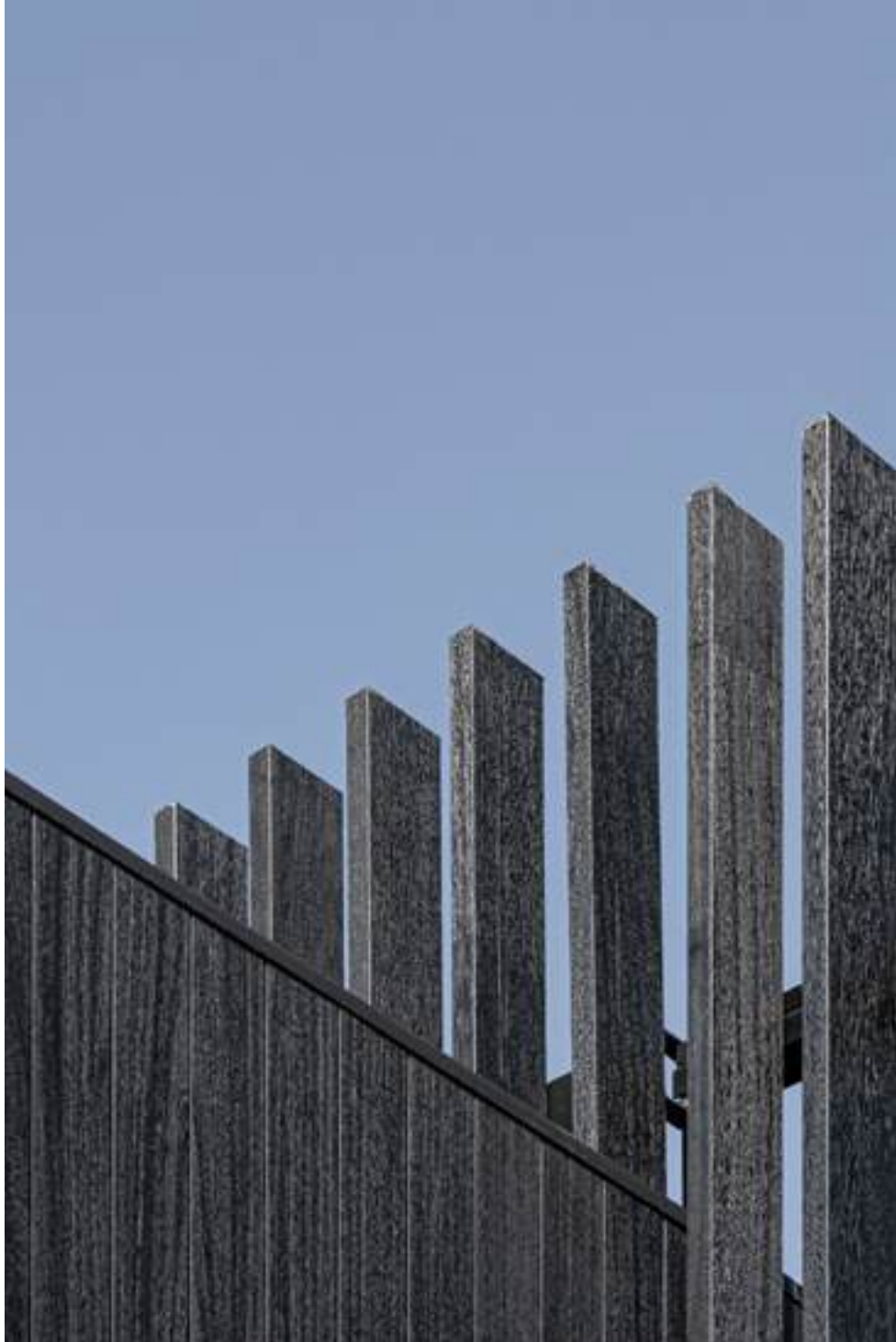
Thanks to Fassade, you can give your home or project the warm look of genuine timber while complying with all fire safety regulations. In the construction industry, fire safety has become a heavily regulated topic. No need to worry! Fassade meets all the relevant regulations.

In the event of a fire breaking out, Fassade's fire-retardant timber will char rather than burn, thus inhibiting the further spread of the fire. Our profiles are designated Fire Classification D and therefore ideally suited for buildings taller than 10 metres.

With the development of **Duriflame®**, Woodstoxx has enabled the production of different colours and profiles in the fast-growing wood species Abechi according to fire class B. This translates into beautiful, fire-safe wooden façade cladding that is also optimally protected and guaranteed to age evenly: whether you choose colour retention or pre-greying.

# Fassade × Domino

In our experience, Domino looks good with Fassade, if you're looking for a great style pairing. Combine the free-standing Domino beams with our Fassade profiles for an original, stylish look. Finger-jointed, laminated or solid wood... There's much more to Domino beams than meets the eye. The various finishes and wood type ensure that simple beams can also offer a wide range of very different solutions.



# Pick your beams.

## 01 ABECHI

We have already introduced ABECHI to you. ABECHI is a fast-growing African hardwood belonging to durability class 2 after thermal modification. The Duricoat® preservation process we apply to this hardwood results in a timber cladding that is both robust and resistant.

## 02 HARDWOOD

We have complemented our Domino range with several alternatives in hardwood. Where we make use of solid wood as a standard when using ABECHI, hardwood allows for the application of a number of interesting options. Techniques such as finger-jointing and laminating enable us to deliver every beam in the desired length or thickness. Our team will be happy to provide you with information about the various types of hardwood available.



DOMINO ABECHI BEAVER



DOMINO IROKO, FINGER-JOINTED AND LAMINATED





# Pick your specs.

Domino is synonymous with customisation. This type of façade cladding can be used in various ways, adding to its versatility. Time to think about what you want and what would be the best match for your project. Our sales team will gladly assist you.

Interested?

Read on to learn all about Domino's unique features!

#### 01 SOLID WOOD, FINGER-JOINTED OR LAMINATED?

We offer ABECHI in the solid version as a standard. However, if you opt for hardwood, we can offer a number of interesting alternatives. These Domino beams are available not only in solid wood but can also be finger-jointed or laminated. Finger-jointed beams consist of shorter pieces of wood that are glued together. This is a technique in which the glue is applied over a considerably larger surface, reinforcing the beam in its entirety. For thicker beams, we can laminate the wood. In this process, multiple slats of wood are glued together.



#### 02 FINS, CLAWS OR A FRAME?

The mounting method used for our Domino cladding is a determining factor for the look. If you choose fins, this will result in a stark look in which the mounting system is fully concealed. When using claws or a frame, on the other hand, the mounting system will be visible. This results in an entirely different aesthetic. No matter what you choose, we will always take the entire situation into consideration and seek the most suitable, customised solution.

#### 03 ONE SIZE RARELY FITS ALL

Just as we already mentioned, Domino is synonymous with custom work. In principle, everything is possible, but the following dimensions are highly versatile and commonly used:

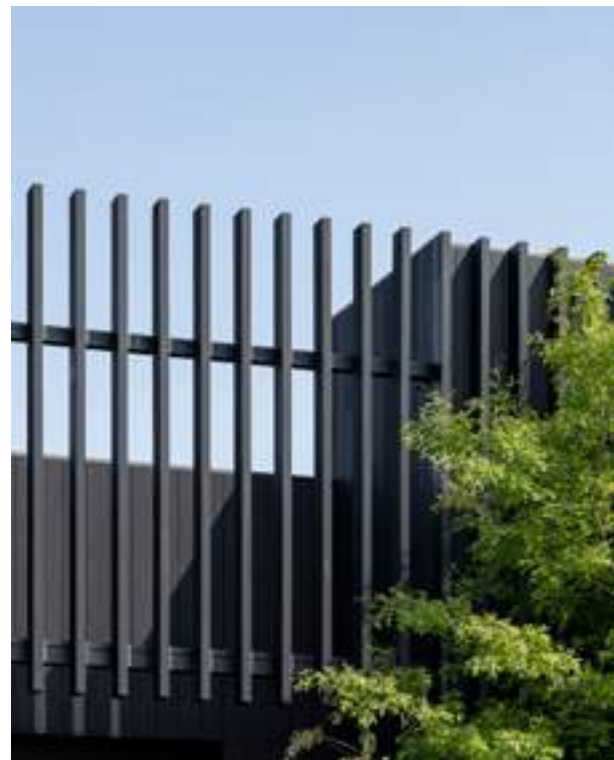
58 x 140 mm

68 x 185 mm

68 x 215 mm

More technical info?

Scan the QR code and gain access to technical drawings and specifications, product photos and photos of completed projects.





# Technical details.

# Fassade

## ABECHI®

A fast-growing African hardwood, belonging to durability class 2 after thermal modification.

Thanks to the Duricoat® preservation process, the timber cladding is even more robust and resistant.



### General

Origin	Cameroon
Durability	II.
Colour	12 colours
FSC	On request
Preservative treatment	Thermal modification + Duricoat®

### Technical info

Density	400 kg/m <sup>3</sup>
Modulus of elasticity	7000 N/mm <sup>2</sup>
Side hardness	1900 N
End hardness	-
Bending strength	57 N/mm <sup>2</sup>
Compressive strength	29 N/mm <sup>2</sup>
Movement	Minor
Impregnability	4
Grain	Coarse



Scan the QR code for access to technical specifications, product photos, Sketch-up and Revit textures and technical drawings.

## PINA®

A fast-growing and distinctive type of wood, belonging to durability class 2 after thermal modification. We also apply the Duricoat® preservation process to Pina, to make the cladding more scratch-resistant and ensure it looks its best.



### General

Origin	Scandinavia
Durability	II.
Colour	12 colours
FSC	On request
Preservative treatment	Thermal modification + Duricoat®

### Technical info

Density	500 kg/m <sup>3</sup>
Modulus of elasticity	11000 N/mm <sup>2</sup>
Side hardness	2940 N
End hardness	3330 N
Bending strength	79 N/mm <sup>2</sup>
Compressive strength	47 N/mm <sup>2</sup>
Movement	Minor
Impregnability	4
Grain	Coarse



Scan the QR code for access to technical specifications, product photos, Sketch-up and Revit textures and technical drawings.

## LIMBA®

A fast-growing and distinctive type of wood, also belonging to durability class 2 after thermal modification.

Typical of this wood species is its warm brown colour, with subtle pinstripes and small pinholes, which provide a characteristic look.



### General

Origin	Africa
Durability	II.
Colour	On request
FSC	On request
Preservative treatment	Thermal modification + Duricoat®

### Technical info

Density	580 kg/m <sup>3</sup>
Modulus of elasticity	10300 N/mm <sup>2</sup>
Side hardness	3030 N
End hardness	3430 N
Bending strength	80 N/mm <sup>2</sup>
Compressive strength	44 N/mm <sup>2</sup>
Movement	Minor
Impregnability	2
Grain	Coarse



Scan the QR code for access to technical specifications, product photos, Sketch-up and Revit textures and technical drawings.



---

**WOODSTOXX MENEN** | Hogeweg 245, 8930 Menen, Belgium

**WOODSTOXX GHENT** | Kortrijksesteenweg 1157, 9051 Ghent, Belgium

**WOODSTOXX ANTWERP** | Jos Smolderenstraat 48, 2000 Antwerp, Belgium

fassade@woodstoxx.be | +32 56 51 79 60

**WOODSTOXX.BE**



